

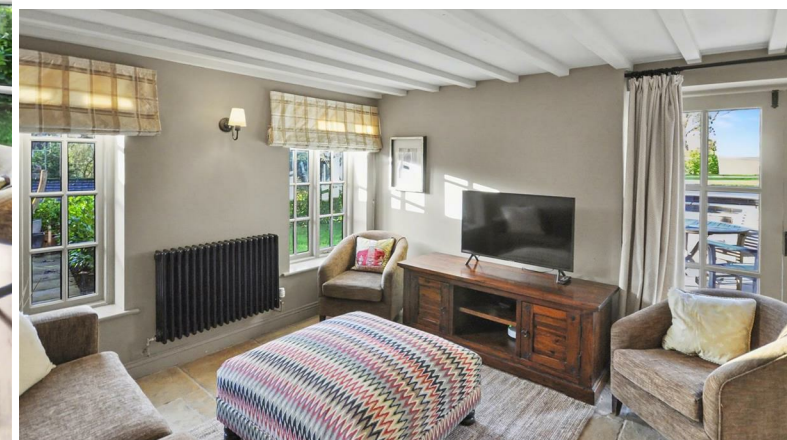
ehB
RESIDENTIAL

Your Property - Our Business



The Annexe, The Bank, Lighthorne

**£1,325 Per
Calendar Month**



A beautifully presented one bedroom, Annexe 5'1" x 2'10" (1.56 x 0.87)
situated in the quaint Village of Lighthorne.
Offered Furnished & Available NOW - All
Utility Bills Included in the Rent

Living Room

13'8" x 11'5" (4.18 x 3.50)

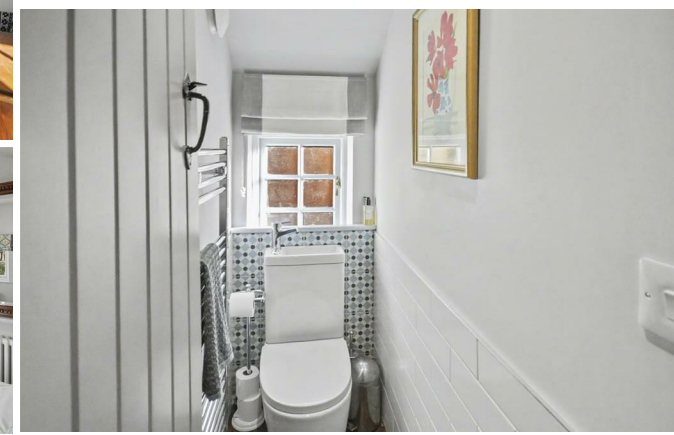
Kitchen

10'10" x 4'11" (3.32 x 1.50)

Bedroom

16'0" x 12'2" (4.88 x 3.71)

En-Suite

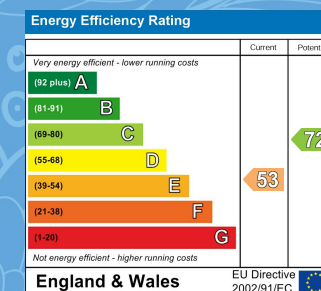


Your Property - Our Business

- Residential Estate Agents •
- Lettings and Property Managers •
- Land and New Homes Agents •

Leamington Spa Office
Somerset House
Clarendon Place
Royal Leamington Spa
CV32 5QN

01926 881144 • ehbresidential.com



Also at: Warwick, 17-19 Jury St, Warwick CV34 4EL